



St. Matthews Shopping Center

615 Harry C Raysor Drive. St. Matthews, SC 29135

CONTACT FOR LEASING DETAILS

IAN WHETSEL

ian@chambers-group.com

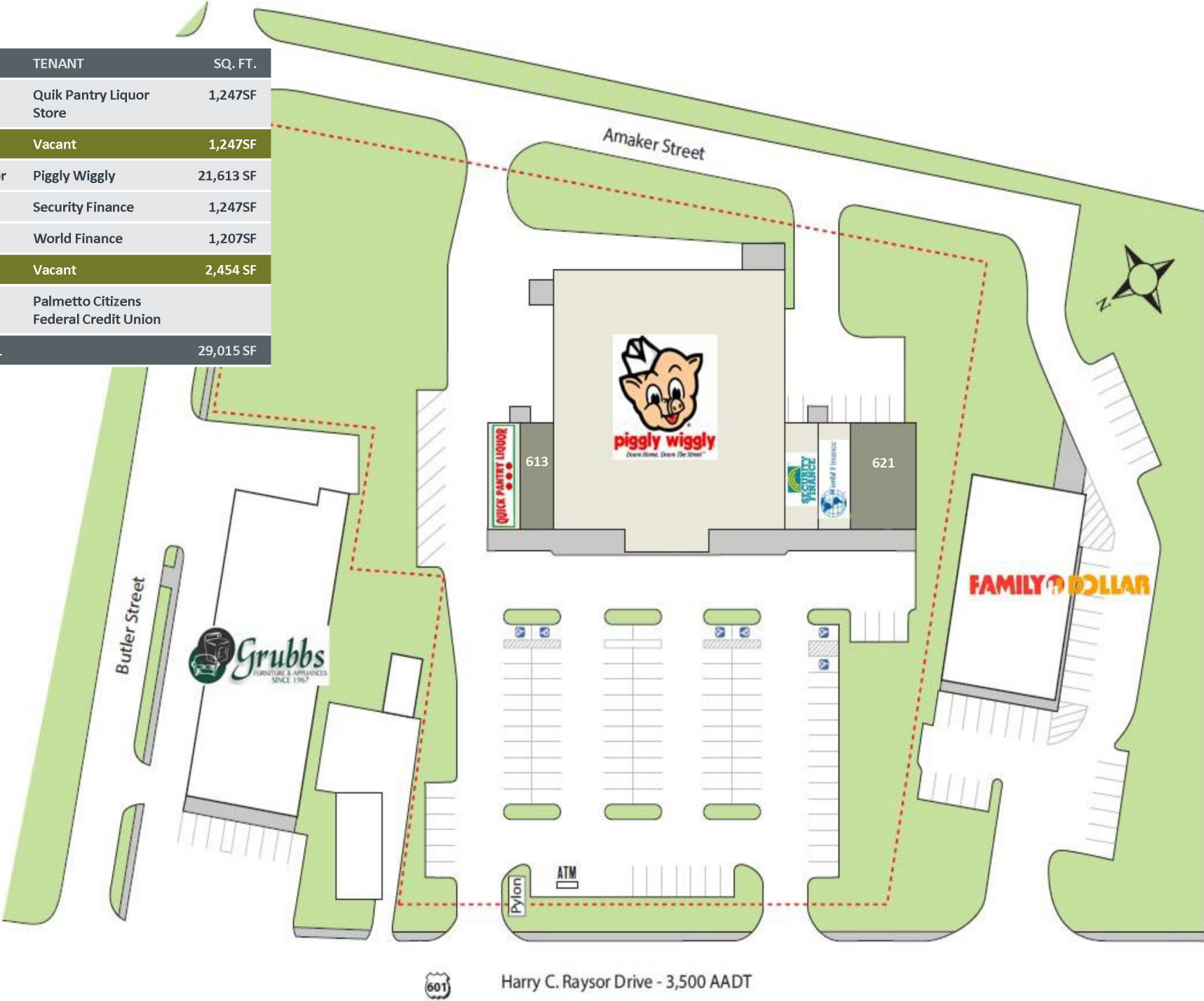
(980) 348-9070

WWW.CHAMBERS-GROUP.COM • 1620 SCOTT AVENUE • CHARLOTTE, NC 28203



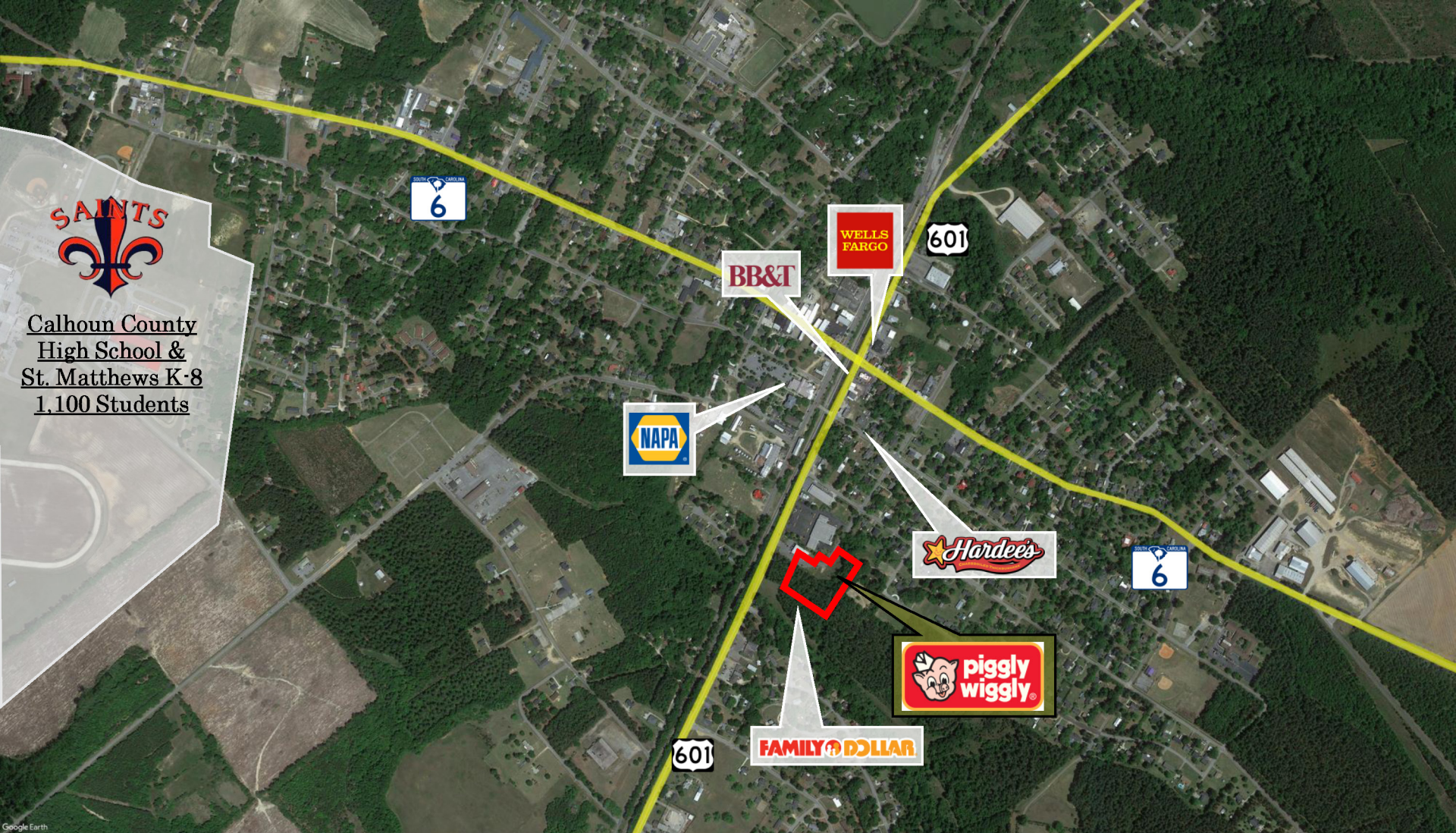
THE CHAMBERS GROUP
ACCELERATING RETAIL SUCCESS™

SUITE	TENANT	SQ. FT.
611	Quik Pantry Liquor Store	1,247SF
613	Vacant	1,247SF
Anchor	Piggly Wiggly	21,613 SF
617	Security Finance	1,247SF
619	World Finance	1,207SF
621	Vacant	2,454 SF
ATM	Palmetto Citizens Federal Credit Union	
TOTAL		29,015 SF





Calhoun County
High School &
St. Matthews K-8
1,100 Students



CONTACT FOR LEASING DETAILS

IAN WHETSEL

ian@chambers-group.com

(980) 348-9070

WWW.CHAMBERS-GROUP.COM • 1620 SCOTT AVENUE • CHARLOTTE, NC 28203



THE CHAMBERS GROUP
ACCELERATING RETAIL SUCCESS™

This information has been obtained from sources believed to be reliable. While we do not doubt its accuracy, we have not verified it and make no guarantee, warranty or representation to independently confirm its accuracy and completeness.



St. Matthews Shopping Center

615 Harry C Raysor Drive
St. Matthews, SC 29135